

## Century Club's Exhibit In Columbian Exposition Recalled

By JUNE ANDERSON ALMQUIST

WITH THE Seattle World's Fair about to open, it is interesting to note that one of Seattle's oldest organizations, the Woman's Century Club, was one of the exhibitors in the World's Columbian Exposition in Chicago in 1893.

In 1893, women were beginning to come out of the kitchen. The movement for women's suffrage was on. And so the General Federation of Women's Clubs, which had been organized in 1890, was pleased when it was invited to take part in the Chicago fair. It was as a member of the federation that the Woman's Century Club, then just two years old, participated.

The exhibit, two leather-bound, hand-printed books about the club, are prized possessions in the group's archives today.

One of the books was the club's manual, containing its constitution and by-laws.

The other, and more interesting, book is entitled, "History of the Woman's Century Club." It is illustrated with water colors of the state flower, the rhododendron.

That those early-day members believed that the next century surely was to be "the woman's century," is indicated by the book's contents. It tells that the

first paper read before the club, presented by the founder, Carrie Chapman Catt, "in an able and comprehensive manner set forth the gradual progress of the sex out of primitive barbarism and slavery into the freedom of today."

(Mrs. Catt was a leader in the women's suffrage movement. She succeeded Susan B. Anthony as president of the National American Woman Suffrage Association and later helped establish the League of Women Voters.)

Here are some other titles of the club's programs those first two years: "Women in Science, Literature and Art," "The Present Status of Woman—Social, Industrial, Legal," "Working Women and Their Wages," "Women and the Social Evil," "Women in Philanthropy," "Physical Education of Women," "Pauper Wives and the Remedy," "The Repudiated Wife" and "Resolved That Woman Is Woman's Best Friend."

There was also a debate on the subject of co-education and another line in the history book tells that one of the members "rang a clear note of comfort out of the jarring subject of divorce."

As evidence of its interest in a variety of subjects, the club formed departments in art, literature, education, hygiene, philanthropy, religion, politics, science, temperance and women's progress.

In addition to the club history, the book contains pictures and biographical sketches of the club's first members, many of whom were prominent in Seattle and Washington history.

It is noted later on in the Century Club's records that the books "attracted considerable attention" at the Chicago Exposition.

\* \* \*

**POTPOURRI:** To help finance their trip to the annual convention of the Washington State Federation of Music Clubs, next month in Pullman, the Philomel Singers are holding a series of luncheons and dinners. Hostesses to date have been Miss Marvel Kolseth and the Mesdames John Wilkinson, Edward Stone, Anton Losse, Lloyd C. Snyder and O. H. Lyon. . . . The University of Washington Faculty Women's Club reports that its talent show last month was a financial success. It grossed \$1,500. . . . Also on the financial side: The women of Plymouth Congregational Church made \$170 at their recent church-library benefit tea.

### Mothers Plan Sale

The Blanchet High School Mothers' Club will hold its annual used-article sale Tuesday, Wednesday and Thursday at 6403 Roosevelt Way N. E.

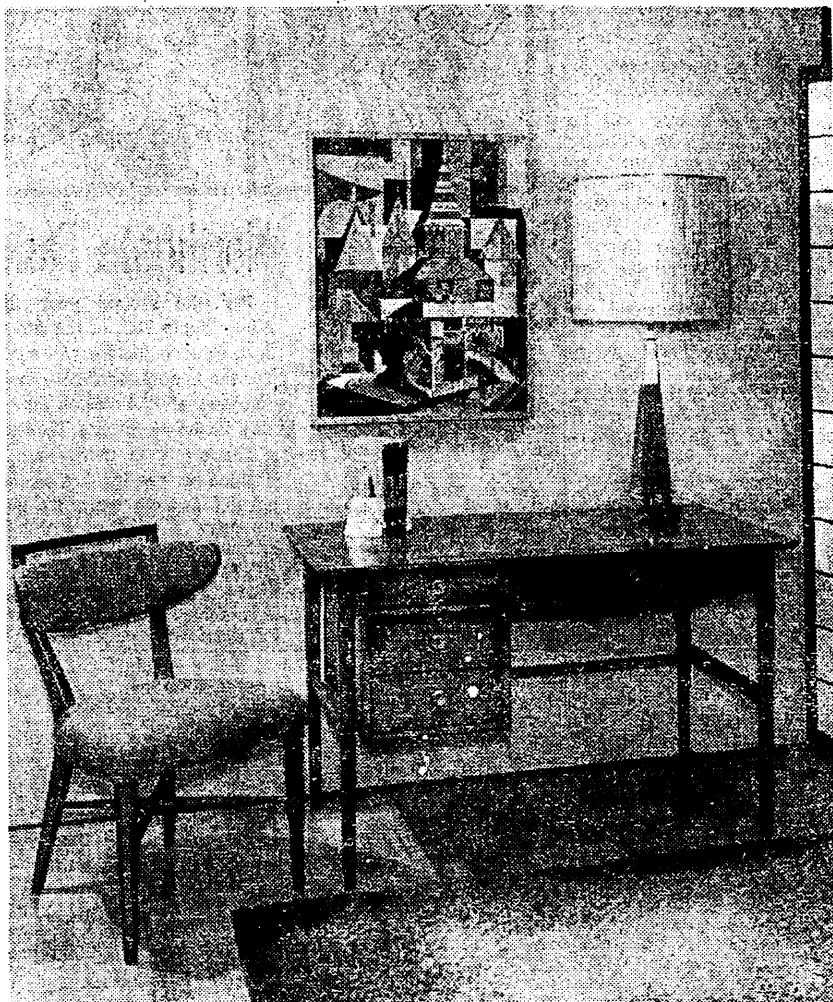
### Far East Society Meeting

The Far East Society will dine at 7 o'clock April 2 in the dining room of the Lowell Hotel.

### Theater Party

The Althena J. Smith Unit, Seattle Child Hearing League, will sponsor the play, "Pop's Place," presented by The Theatricals, the evening of March 31 at the Richmond Highlands Masonic Temple. Proceeds will benefit the league. The chairman is Mrs. J. R. Blakesley.

## Utility, Beauty in Study Corner



STUDY CORNER TAKES SMALL FLOOR AREA

For information call Dorothy Neighbors, Main 2-0300.

By MARGERY R. PHILLIPS, Home Fashion Editor

Often, unused space can be put to good use by the addition of a few pieces of well-designed furniture and colorful accessories as demonstrated in today's photograph arranged

by Mary Hilleck, interior designer.

This inviting study corner utilizes a minimum of floor area in family room, bedroom, hallway alcove or along one wall of a passageway. Book-keeping for the household, home work for the teen-agers,

and correspondence become less of a chore in a setting as pleasing as this one.

The trim desk and chair, brightened with a pumpkin-colored cushion and back rest, are from the "Perrenian" collection of fine furniture. Both pieces are light in scale and serve a functional as well as a decorative purpose. True, the four drawers are limited in size but they assure a neat spot for papers and bills, allowing no room for clutter or accumulation!

Harry Bonath's bright and interesting oil painting called "Queen Anne" makes the whole setting important wherever it is used. The vibrant colors are repeated in the all-wool area rug called "Malarran," which blends from gold to brilliant red in a subtle sunburst pattern.

The tall lamp, with pecan wood base and light - reflecting shade, is excellent for reading or writing and is a decorative asset for the grouping.

Actually, the desk and chair take only a space 5 feet long and 3 feet deep. Do you have a good wall area going to waste where you can achieve for your family's enjoyment utility as well as beauty?

If so, an inviting little study corner is a real asset.

### Polaris Club Dinner

The Polaris Club will hold a dinner at 6:15 o'clock Wednesday at the Women's University Club. Mrs. Mary Norris, home-economics director of Seattle City Light, will speak.

## Martha Apostol, Stuart B. Plumb To Be Married

The engagement and April 17 wedding plans of Miss Martha Anne Apostol and Mr. Stuart Byrns Plumb are announced by her parents, Mr. and Mrs. George Nick Apostol.

The bride-elect attended the University of Washington and is a member of Kappa Delta Sorority. Her fiancé, the son of Mr. and Mrs. Horace Donham Plumb of Seahurst, is a U. W. graduate and a member of Chi Psi Fraternity and Pi Omicron Sigma, honorary.

The wedding will be in the chapel of the University Congregational Church. The couple will reside in California.

### A. I. B. Members Meeting

The Women's Committee of the Seattle Chapter, American Institute of Banking, will hold a 5:30 o'clock dinner April 2 at the Harbor Club. The guest speaker, Mr. Samuel Levinson, will talk on his trip to Russia.



**TO TAKE OFFICE:** Mrs. Loretta Hurr will be installed president of the Lake City Emblem Club at a ceremony Tuesday evening at the Lake City Elks' Club. Also taking office will be the Mesdames Anthony Del Mastro and Arthur Hademan, vice presidents; Albert Vangel, John Knight and Robert Arnold, secretaries, and Charles Furstenworth, treasurer. Junior past president is Mrs. James Donaldson.

## B. P. W. Club Sets Discussion On 'Image'

"Building a Good Image" will be the theme of a panel discussion on public relations at a dinner of the Seattle Business and Professional Women's Club at 6:30 o'clock Tuesday in the Sorrento Hotel.

Guest speakers will be Mr. Joseph LeBrie, Mr. Ted Best, who are in public relations; the Rev. Rudolph Devik of the Greater Seattle Council of Churches, and Miss Ellen Walsh of the Seattle Public Library's adult-education department.

Speakers from the B. P. W. Club will be Miss Mary Lee Teigh, who is a securities analyst; Mrs. Beulah Compton of the State Department of Labor and Industries, and Miss Lulu M. Fairbanks, writer.

The summation will be given by Mrs. Bernard A. Commeree, public - relations chairman for the Washington State Federation of B. P. W. Clubs.

## Greek Theme Selected For Bureau's Tea

There will be a Greek theme to the silver tea to be given by the Americanization Bureau from 1 to 5 o'clock tomorrow in the home of the president, Mrs. Carry Kyreacos.

A variety of Greek pastries will be served.

Pouring will be the Mesdames Frank Rauth, Isabella Bartlett, Clara Beaton, L. L. Strong and Lilla C. Norman and Justice of the Peace Evangeline Starr.

### Mothers Plan Style Show

A fashion show will highlight the Delta Gamma Sorority Mothers' Club tea from 2:30 to 5 o'clock Friday in the chapter house. The sorority's members and their mothers will model fashions from the Towne Shop. Mrs. James A. Campbell is the chairman.

## Winners Of Co-Arts Show Announced

Winners of the Seattle Co-Arts' spring exhibit, on view at Doces' Majestic Furniture Co., are as follows:

Water colors—Violet Rhoads, first; Victoria Savage, second; Alexander Trimble, third, and Marion L. Bell and JoAnne Haldeman, honorable mentions. Oils—Peggy Isaacson, first; Cecele Lewinson, second; Patricia Nickelson, third, and Gladys Bloxham and Jean Hanson, honorable mentions.

The exhibit will continue through April 19. The Co-Arts' pictures-of-the-month are Gudrun Brask's water color, "Any Day," and Delores White's oil, "Morning Shadows." These pictures will be displayed through April at Martin & Eckmann's in the University District.

**Frederick & Nelson**  
DIVISION OF  
MARSHALL FIELD & COMPANY

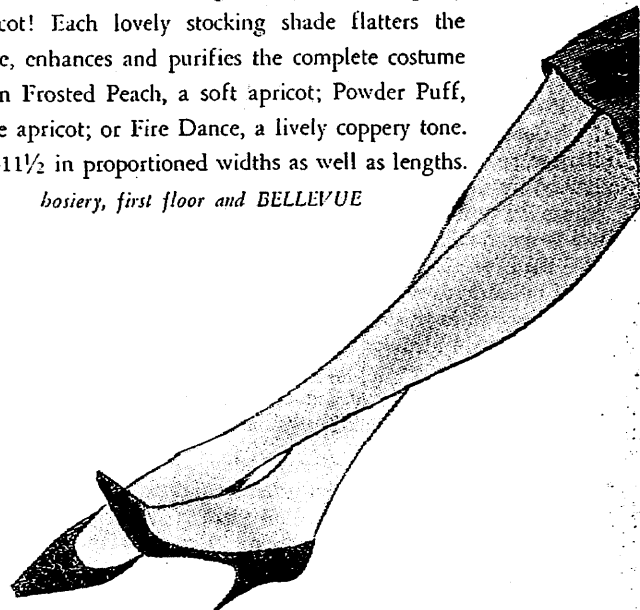
ROUND-THE-CLOCK HOSIERY IN

**APRICOT TONES**

pair, 1.50 to 1.95

The newest and most exciting hosiery story for spring is apricot! Each lovely stocking shade flatters the skintone, enhances and purifies the complete costume look. In Frosted Peach, a soft apricot; Powder Puff, a subtle apricot; or Fire Dance, a lively coppery tone. In 8½-11½ in proportioned widths as well as lengths.

hosiery, first floor and BELLEVUE



one week only!

**D'ANTONIO'S**  
"CLASSIC"  
PUMP  
AT SAVINGS

**19.90**



D'Antonio presents the necessary basic shoe to complete your spring wardrobe. This slim, tapered toe pump is available with high or medium heel in shiny black patent leather, bone or navy blue calfskin. Substantial fashion savings are yours for one week only!

designer shoe salon, second floor



Faberge  
**STRAW HAT ENSEMBLE**  
3.75\*

Straw Hat is in the air again with a brand new Straw Hat Red Lipstick to go with your cologne, set, 3.75\* Also: Nail Glace, 1.50\*; lipstick, 2.50\*. Colour Set of Lipstick and Nail Glace, 3.75\*; Cologne, 1.50\*- \$10\*; Cologne Spray, 2.75\*, 3.75\*

\*plus 10% federal tax

cosmetics, first floor and BELLEVUE

order by mail, or call Mu. 2-1540

shop downtown Monday noon to 9